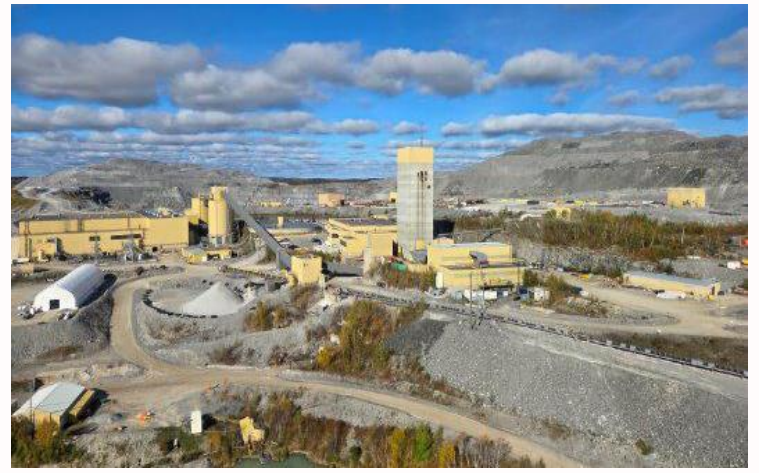


## Hiring Development Planning Engineer

The Hemlo Mine (“Hemlo”) is a long-life, fully integrated gold mining operation located approximately 35 km east of the town of Marathon in Northwestern Ontario, Canada. With more than a decade of reserves and significant exploration upside along the proven Hemlo greenstone belt, the organization is positioned to unlock the next chapter of growth at one of Canada’s premier gold districts.



### Your new role

As a member of the Technical Services team, the successful candidate will report to the Senior Mine Planning Engineer. This role will focus on underground development planning and scheduling to support safe, efficient, and practical mine execution. The successful candidate will work closely with Operations, Geology, Ventilation, Survey, Ground Control, and Production Engineering teams to support short-term and mid-term mine development plans.

- Develop and maintain short-term and mid-term underground development plans and schedules.
- Support mine design activities including ramp, level, sill, and infrastructure development layouts.
- Coordinate development priorities with Operations and Technical Services teams.
- Monitor underground development performance and track progress against plan.
- Assist with planning & coordination of ventilation, services, and infrastructure requirements associated with mine Development
- Identify and communicate scheduling conflicts, operational constraints, and improvement opportunities.
- Work collaboratively with Geology, Survey, Ground Control, and Production teams to ensure practicality and effective designs.

### What you'll need to succeed

- Bachelor’s degree in Mining Engineering or equivalent.
- Registered or eligible to register as a Professional Engineer
- Previous underground mine planning experience is required.
- Underground operational experience considered a strong asset.
- Strong understanding of underground mine development methods and sequencing.
- Experience with mine planning software such as Deswik, AutoCAD, or similar programs required.
- Physically capable of performing underground fieldwork, including walking steep grades and lifting up to 50 lbs. and a Valid Class G driver’s license required.

### What you'll get in return

- Base salary range from \$85,000 to \$120,000 per year, depending on experience & qualifications.
- Opportunity to earn up to a targeted 12.5% bonus on top of the proposed wage
- Relocation & housing assistance available for all roles
- Flexible rotation options (7x7, 14x14) to support strong work-life integration
- FIFO/DIDO from anywhere! Thunder Bay airport provides ease and convenience with the connection to most national flights.
- Shuttles provided to & from the airport/camp/site
- Full camp accommodations for both FIFO and DIDO workers (featuring private en-suite bathrooms)
- 100% employer-paid benefits including health, dental, vision, and paramedical coverage
- Educational assistance for Hemlo employees & scholarships for the dependents of Hemlo employees
- Above-market wages and salaries, with bonus programs and 12% pension contributions for all roles
- Clear opportunities for career progression and internal mobility
- Direct access to senior leadership and on-site mentorship

Hays Recruitment in proud partnership with Hemlo Mining Corp.

If you're interested in this role talk to [owen.macpherson@hays.com](mailto:owen.macpherson@hays.com), the specialist consultant managing this position or call us at **5874100635**

If this job isn't quite right for you, but you are looking for a new position, please contact us for a confidential discussion about your career.