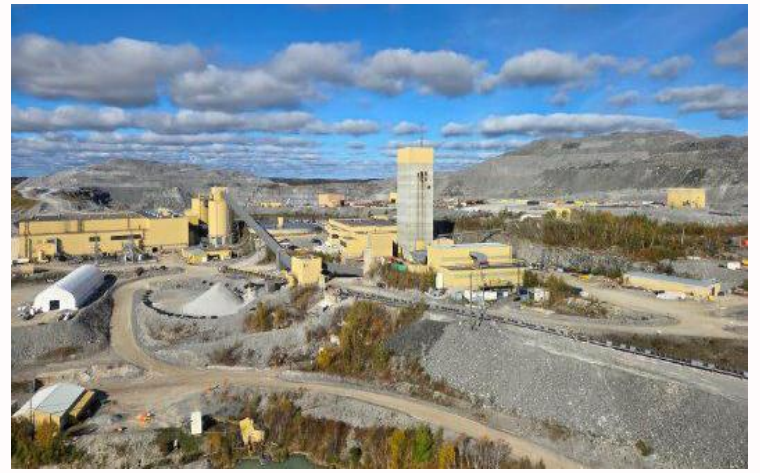


Hiring Electrical Supervisor

The Hemlo Mine (“Hemlo”) is a long-life, fully integrated gold mining operation located approximately 35 km east of the town of Marathon in Northwestern Ontario, Canada. With more than a decade of reserves and significant exploration upside along the proven Hemlo greenstone belt, the organization is positioned to unlock the next chapter of growth at one of Canada’s premier gold districts.



Your new role

The Electrical Supervisor is responsible for supervising and coordinating the safe, efficient repair and maintenance of surface electrical equipment and infrastructure. This role provides technical leadership to electrical maintenance teams, ensures compliance with regulatory requirements, supports reliable power supply to site operations, and drives continuous improvement in maintenance performance.

What you'll need to succeed

- Previous experience in the mining industry is required.
- Minimum of five 5 years of progressively responsible experience in the electrical field, with prior supervisory or leadership experience preferred.
- Strong understanding of electrical theory, codes, standards, tools, and best practices applicable to industrial and mining environments.
- Demonstrated ability to troubleshoot complex electrical systems, including surface power distribution and infrastructure.
- Proven safety leadership and a strong safety record, with the ability to support achievement of safety, environmental, equipment protection, and production goals.
- Experience working with CMMS systems (SAP preferred).
- Excellent leadership, communication (verbal and written), and interpersonal skills.
- Strong planning, organizational, and time-management skills.
- Ability to work effectively with a diverse workforce, including employees and contractors.
- Proficient in computer applications, including CMMS, reporting tools, and Microsoft Office.
- Ability to perform the essential functions of the position, including working outdoors in varied weather conditions and responding to operational needs, including after-hours support as required.

What you'll get in return

- Opportunity to earn up to a 15% targeted short-term bonus and a targeted 15% long term incentive on top of the proposed wage
- Relocation & housing assistance available for all roles
- 7x7 rotation to support strong work-life integration
- FIFO/DIDO from anywhere! Thunder Bay airport provides ease and convenience with the connection to most national flights.
- Shuttles provided to & from the airport/camp/site
- Full camp accommodations for both FIFO and DIDO workers (featuring private en-suite bathrooms)
- 100% employer-paid benefits including health, dental, vision, and paramedical coverage
- Educational assistance for Hemlo employees & scholarships for the dependents of Hemlo employees
- Above-market wages and salaries, with bonus programs and 12% pension contributions for all roles
- Clear opportunities for career progression and internal mobility
- Direct access to senior leadership and on-site mentorship

Hays Recruitment in proud partnership with Hemlo Mining Corp.

If you're interested in this role talk to Danielle.Furtado@hays.com, the specialist consultant managing this position or call us at **4162036743**.

If this job isn't quite right for you, but you are looking for a new position, please contact us for a confidential discussion about your career.