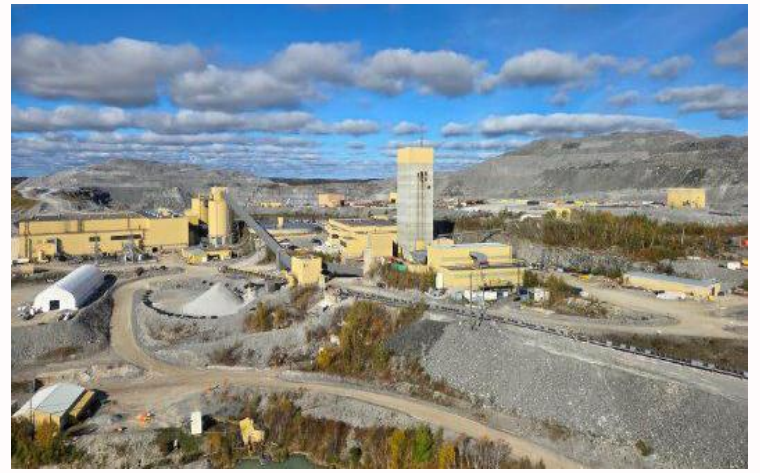


Hiring Electrical Technologist

The Hemlo Mine (“Hemlo”) is a long-life, fully integrated gold mining operation located approximately 35 km east of the town of Marathon in Northwestern Ontario, Canada. With more than a decade of reserves and significant exploration upside along the proven Hemlo greenstone belt, the organization is positioned to unlock the next chapter of growth at one of Canada’s premier gold districts.



Your new role

As an Electrical Technologist, you will provide specialized technical support for electrical, control, and automation systems across surface and underground mining operations. Reporting to the Electrical Supervisor, you will focus on troubleshooting, system optimization, commissioning, and continuous improvement initiatives that enhance equipment reliability, safety, and production performance. You will work closely with engineers, electricians, and operations teams to support both day-to-day maintenance and capital projects in a 24/7 mining environment

What you'll need to succeed

- Electrical Engineering Technologist diploma or equivalent technical qualification
- Registration with, or eligibility for, certification through OACETT
- Minimum 5 years of experience supporting industrial electrical and control systems, preferably in mining or heavy industry
- Hands-on experience with PLCs, VFDs, MCCs, SCADA/HMI systems, and industrial automation networks
- Working knowledge of medium- and high-voltage electrical distribution systems
- Proficiency with AutoCAD for electrical drawings and SAP or CMMS systems for maintenance management
- Strong troubleshooting, analytical, and problem-solving skills
- Ability to work safely in underground and industrial environments, including confined spaces and working at heights
- Willingness to work a rotating 7/7 schedule with 12-hour day and night shifts

What you'll get in return

- Opportunity to earn up to a targeted 60% bonus on top of the proposed wage
- Relocation & housing assistance available for all roles
- Flexible rotation options (4x3, 7x7, 14x14) to support strong work-life integration
- FIFO/DIDO from anywhere! Thunder Bay airport provides ease and convenience with the connection to most national flights.
- Shuttles provided to & from the airport/camp/site
- Full camp accommodations for both FIFO and DIDO workers (featuring private en-suite bathrooms)
- 100% employer-paid benefits including health, dental, vision, and paramedical coverage
- Educational assistance for Hemlo employees & scholarships for the dependents of Hemlo employees
- Above-market wages and salaries, with bonus programs and 12% pension contributions for all roles
- Clear opportunities for career progression and internal mobility
- Direct access to senior leadership and on-site mentorship

Hays Recruitment in proud partnership with Hemlo Mining Corp.

If you're interested in this role talk to owen.macpherson@hays.com, the specialist consultant managing this position or call us at **5874100635**

If this job isn't quite right for you, but you are looking for a new position, please contact us for a confidential discussion about your career.