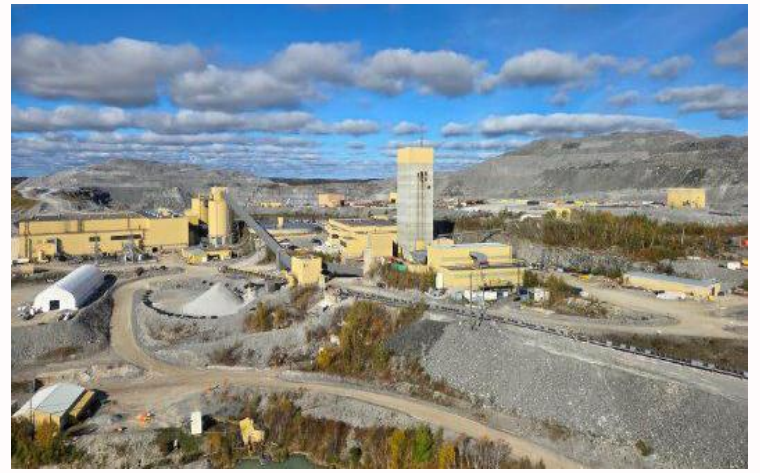


## Hiring Maclean Bolter Operators

The Hemlo Mine (“Hemlo”) is a long-life, fully integrated gold mining operation located approximately 35 km east of the town of Marathon in Northwestern Ontario, Canada. With more than a decade of reserves and significant exploration upside along the proven Hemlo greenstone belt, the organization is positioned to unlock the next chapter of growth at one of Canada’s premier gold districts.



### Your new role

Working as part of the underground development team, the Bolter Operator supports mine advancement by operating bolting equipment, identifying ground hazards, verifying ground conditions, maintaining equipment condition, and ensuring all ground support activities are completed safely, efficiently, and in compliance with regulatory and site requirements.

- Operate Maclean bolting equipment to install ground support in development headings in accordance with ground control plans and engineering specifications.
- Accurately position and set up the bolter to ensure proper bolt spacing, resin application, and torque or tension requirements.
- Inspect ground conditions, backs, ribs, and work areas prior to bolting; identify hazards and implement appropriate controls.
- Install rock bolts, screen, straps, and other ground support components as required.
- Complete pre-operational inspections of bolting equipment; report defects and ensure deficiencies are addressed.
- Monitor bolting performance and equipment condition; make adjustments as required to ensure quality installation. Frequent climbing, bending, kneeling, twisting, and overhead reaching during bolting activities.

### What you'll need to succeed

- Underground Hard Rock Mining Common Core is required.
- Minimum 5 years of underground mining experience, with experience operating a Maclean bolter.
- Demonstrated understanding of ground control principles, bolting standards, and safe bolting practices. Ability to read and interpret ground control plans, layouts, and engineering drawings.
- Strong hazard recognition skills and ability to make sound decisions in changing underground conditions.
- Effective communication skills and ability to work collaboratively as part of a team.
- Valid driver’s license is required.
- Ability to work in all underground environments, including confined spaces and at heights.
- Ability to lift, carry, push, and pull 50 lbs or more, including bolts, screen, resin, hoses, and tools.

### What you'll get in return

- Opportunity to earn up to a 100% (target) bonus on top of the proposed wage
- Relocation & housing assistance available for all roles
- Flexible rotation options (7x7, 14x14) to support strong work-life integration
- FIFO/DIDO from anywhere! Thunder Bay airport provides ease and convenience with the connection to most national flights.
- Shuttles provided to & from the airport/camp/site
- Full camp accommodations for both FIFO and DIDO workers (featuring private en-suite bathrooms)
- 100% employer-paid benefits including health, dental, vision, and paramedical coverage
- Educational assistance for Hemlo employees & scholarships for the dependents of Hemlo employees
- Above-market wages and salaries, with bonus programs and 12% pension contributions for all roles
- Clear opportunities for career progression and internal mobility
- Direct access to senior leadership and on-site mentorship

Hays Recruitment in proud partnership with Hemlo Mining Corp.

If you're interested in this role send your resume to [Reena.Dadial@hays.com](mailto:Reena.Dadial@hays.com), the specialist consultant managing this position or call us at **6046481729**

If this job isn't quite right for you, but you are looking for a new position, please contact us for a confidential discussion about your career.