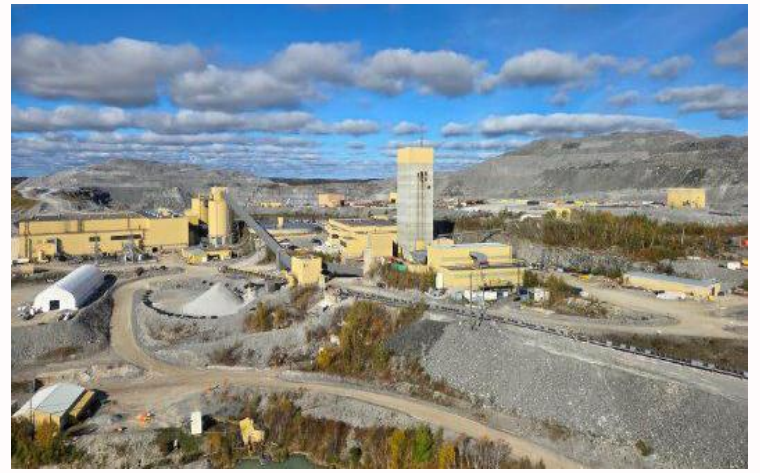


Hiring Mine Planners

The Hemlo Mine (“Hemlo”) is a long-life, fully integrated gold mining operation located approximately 35 km east of the town of Marathon in Northwestern Ontario, Canada. With more than a decade of reserves and significant exploration upside along the proven Hemlo greenstone belt, the organization is positioned to unlock the next chapter of growth at one of Canada’s premier gold districts.



Your new role

As a member of the Mine Planning team, the successful candidate will report to the Senior Production Engineer. The successful candidate is highly motivated and have a proven commitment to workplace safety and leadership. They will have the opportunity to gain experience, and grow their career in the following areas: Production planning (drill, blast, backfill); Ventilation; Survey; Projects; Ground Control; Short-term and mid-term scheduling; Development planning;

Key accountabilities regardless of work area are as follows:

- Proven commitment to workplace safety.
- Ensure effectiveness and safe productivity of the mine.
- Work collaboratively with mine production and geology departments and assist other functional areas to achieve their objectives.
- Facilitate conceptual meetings for mine design.
- Collaborate with various departments to ensure practicality of designs.
- Optimize ore recovery through safe and efficient mining.
- Develop a good understanding of the underground operating conditions, in order to provide safe and reasonable recommendations regarding mine planning inputs.
- Visit underground active mining areas on a regular basis.
- Assist with updating mine planning standards and procedures.
- Assist with special projects that arise as required.

What you'll need to succeed

- Mining Engineering Technician Diploma, Mine Engineering Degree, or equivalent experience preferred.
- Minimum of 1–3 years’ experience in an underground mining environment, preferably in ventilation or technical services.
- Knowledge of underground ventilation systems, airflow measurement, and gas detection equipment.
- Familiarity with Deswik and Ventsim, or other ventilation modeling software considered an asset.
- Strong understanding of underground mining operations and environmental controls.
- Physically capable of working in varied underground conditions, walking significant grades, and lifting up to 50 lbs.
- Ability to prepare clear and concise reports.
- Valid Class G driver’s license required; ability to operate a manual vehicle considered an asset.

What you'll get in return

- Relocation & housing assistance available for all roles
- Flexible rotation options (7x7, 14x14) to support strong work-life integration
- FIFO/DIDO from anywhere! Thunder Bay airport provides ease and convenience with the connection to most national flights.
- Shuttles provided to & from the airport/camp/site
- Full camp accommodations for both FIFO and DIDO workers (featuring private en-suite bathrooms)
- 100% employer-paid benefits including health, dental, vision, and paramedical coverage
- Educational assistance for Hemlo employees & scholarships for the dependents of Hemlo employees
- Above-market wages and salaries, with bonus programs and 12% pension contributions for all roles
- Clear opportunities for career progression and internal mobility
- Direct access to senior leadership and on-site mentorship

Hays Recruitment in proud partnership with Hemlo Mining Corp.

If you're interested in this role talk to owen.macpherson@hays.com, the specialist consultant managing this position or call us at **5874100635**

If this job isn't quite right for you, but you are looking for a new position, please contact us for a confidential discussion about your career.