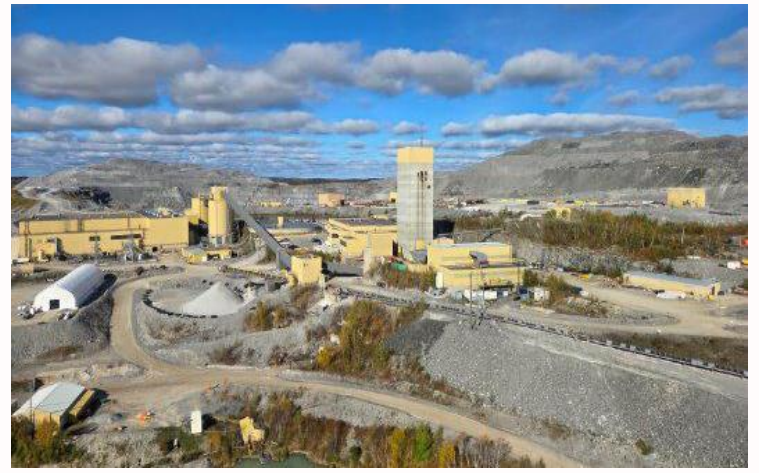


Hiring Production Planner

The Hemlo Mine (“Hemlo”) is a long-life, fully integrated gold mining operation located approximately 35 km east of the town of Marathon in Northwestern Ontario, Canada. With more than a decade of reserves and significant exploration upside along the proven Hemlo greenstone belt, the organization is positioned to unlock the next chapter of growth at one of Canada’s premier gold districts.



Your new role

As a member of the Technical Services team, the successful candidate will report to the Senior Production Engineer. This role will support underground production activities through short-term planning, scheduling, mine coordination, and operational support while working closely with Operations, Geology, Ground Control, Ventilation, and Survey teams.

- Support daily, weekly, and monthly underground production planning activities.
- Assist with development and production scheduling to support safe and efficient mining operations.
- Monitor underground production performance and assist with tracking key operational metrics.
- Work collaboratively with Operations and Technical Services teams to optimize mine productivity and ore recovery.
- Assist with drill and blast planning and coordination activities.
- Conduct underground inspections and field reviews to support production activities and identify improvement opportunities.
- Support ventilation, ground control, backfill, and development planning activities as required.
- Assist with updating mine plans, drawings, & production reports.
- Participate in operational meetings and contribute to mine planning discussions

What you'll need to succeed

- Bachelor’s degree in Mining Engineering or equivalent.
- Registered or eligible to register as an Ontario EIT
- Underground mining experience strongly preferred; underground hard rock mining experience considered an asset
- Exposure to mine planning software such as Deswik, AutoCAD, or similar programs considered an asset.
- Physically capable of performing underground fieldwork, including walking steep grades and lifting up to 50 lbs. and a Valid Class G driver’s license required.

What you'll get in return

- Base salary range from \$85,000 to \$120,000 per year, depending on experience & qualifications.
- Opportunity to earn up to a targeted 12.5% bonus on top of the proposed wage
- Relocation & housing assistance available for all roles
- Flexible rotation options (7x7, 14x14) to support strong work-life integration
- FIFO/DIDO from anywhere! Thunder Bay airport provides ease and convenience with the connection to most national flights.
- Shuttles provided to & from the airport/camp/site
- Full camp accommodations for both FIFO and DIDO workers (featuring private en-suite bathrooms)
- 100% employer-paid benefits including health, dental, vision, and paramedical coverage
- Educational assistance for Hemlo employees & scholarships for the dependents of Hemlo employees
- Above-market wages and salaries, with bonus programs and 12% pension contributions for all roles
- Clear opportunities for career progression and internal mobility
- Direct access to senior leadership and on-site mentorship

Hays Recruitment in proud partnership with Hemlo Mining Corp.

If you're interested in this role send your resume to Reena.Dadial@hays.com, the specialist consultant managing this position or call us at **6046481729**

If this job isn't quite right for you, but you are looking for a new position, please contact us for a confidential discussion about your career.