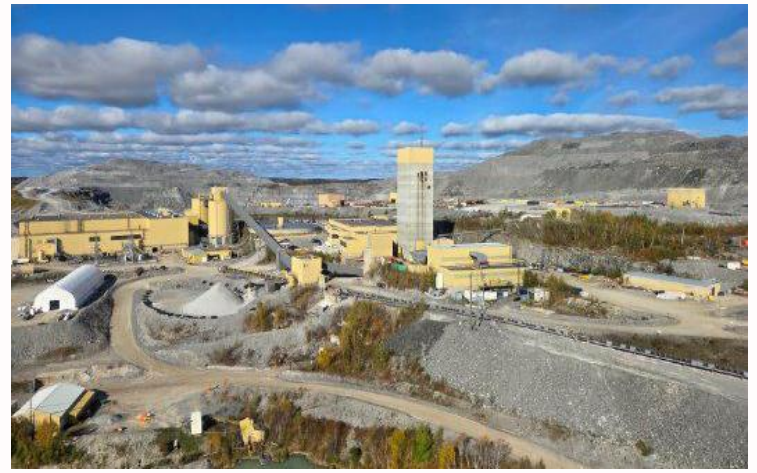


Hiring Scoop Operators

The Hemlo Mine (“Hemlo”) is a long-life, fully integrated gold mining operation located approximately 35 km east of the town of Marathon in northwestern Ontario, Canada. With more than a decade of reserves and significant exploration upside along the proven Hemlo greenstone belt, the organization is positioned to unlock the next chapter of growth at one of Canada’s premier gold districts.



Your new role

The Scoop Operator is responsible for the safe and efficient operation of underground loading equipment to support development and production activities. This role is critical to mine performance through mucking headings and stockpiles, maintaining travel ways, and coordinating haulage movements.

- Working as part of the underground operations team, the Scoop Operator ensures equipment is operated safely, material is moved efficiently, and all work complies with site procedures, regulatory requirements, and safety standards.
- Muck development faces, production headings, sumps, and stockpiles using manual and remote loading techniques.
- Load haul trucks with ore or waste while maintaining safe equipment interactions and traffic control.
- Identify and report unsafe conditions, ground hazards, or equipment defects in assigned work areas.
- Maintain underground roadways and travel ways by cleaning, levelling, and removing obstructions.
- Follow written and verbal instructions to complete mucking cycles efficiently and safely.
- Maintain accurate daily logs, plods, and equipment checklists.
- Coordinate movements with haul truck operators and other underground personnel to optimize cycle times.

What you'll need to succeed

- Underground Common Core with required specialty modules.
- Minimum 5 years of underground mining experience in development and/or production roles.
- Previous experience mucking with Atlas Copco, Sandvik, and/or CAT loading units is considered an asset.
- Strong communication and radio etiquette; ability to follow detailed instructions and work collaboratively.
- Ability to learn new techniques quickly and work effectively in a cross-cultural environment.
- Physically capable of underground work, including climbing ladders and equipment, walking on uneven terrain, bending, reaching, and performing repetitive arm and hand movements.
- Ability to perform both fine motor tasks (equipment controls, documentation) and gross motor tasks (moving hoses, pumps, and heavy components).
- Tolerance for exposure to noise, dust, humidity, vibration, and low-light conditions typical of underground mining.
- Ability to lift, carry, push, and pull up to 50 lbs as required.
- Ability to wear all required PPE and respond effectively in emergency situations.

What you'll get in return

- Opportunity to earn up to a 70% (target) bonus on top of the proposed wage
- Relocation & housing assistance available for all roles
- Flexible rotation options (7x7, 14x14) to support strong work-life integration
- FIFO/DIDO from anywhere! Thunder Bay airport provides ease and convenience with the connection to most national flights.
- Shuttles provided to & from the airport/camp/site
- Full camp accommodations for both FIFO and DIDO workers (featuring private en-suite bathrooms)
- 100% employer-paid benefits including health, dental, vision, and paramedical coverage
- Educational assistance for Hemlo employees & scholarships for the dependents of Hemlo employees
- Above-market wages and salaries, with bonus programs and 12% pension contributions for all roles
- Clear opportunities for career progression and internal mobility
- Direct access to senior leadership and on-site mentorship

Hays Recruitment in proud partnership with Hemlo Mining Corp.

If you're interested in this role talk to Danielle.Furtado@hays.com, the specialist consultant managing this position or call us at **4162036743**.

If this job isn't quite right for you, but you are looking for a new position, please contact us for a confidential discussion about your career.