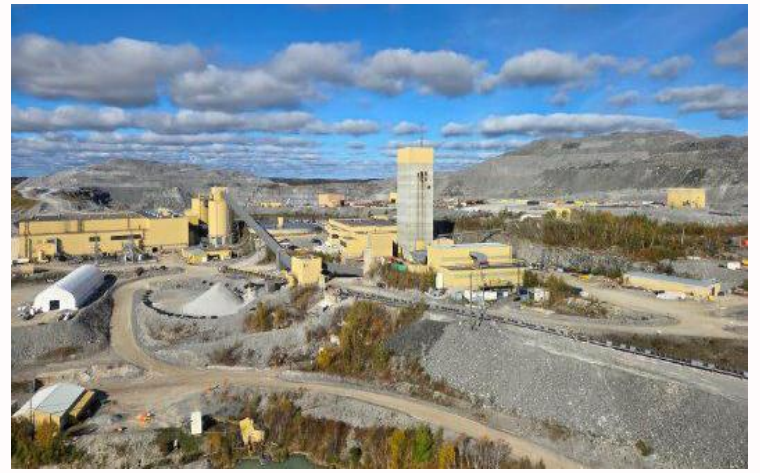


## Hiring Underground Heavy Duty Mechanics

The Hemlo Mine (“Hemlo”) is a long-life, fully integrated gold mining operation located approximately 35 km east of the town of Marathon in Northwestern Ontario, Canada. With more than a decade of reserves and significant exploration upside along the proven Hemlo greenstone belt, the organization is positioned to unlock the next chapter of growth at one of Canada’s premier gold districts.



### Your new role

As an Underground Heavy Duty Journeyman Mechanic, you will be responsible for maintaining, troubleshooting, and repairing underground mobile equipment to ensure safe, reliable, and efficient operations. This hands-on role plays a critical part in supporting production targets by minimizing downtime and maintaining equipment to manufacturer and company standards. You will work closely with supervisors, planners, and operators in a dynamic underground mining environment on a rotating shift schedule.

### What you'll need to succeed

- Red Seal–certified Heavy Duty Equipment Technician (Journey person)
- 3–5 years of underground mining maintenance experience
- Hands-on experience with underground equipment such as jumbos, bolters, scoops, and haul trucks (e.g., Sandvik, MacLean)
- Strong knowledge of diesel engines, hydraulic systems, and electrical diagnostics
- Ability to read and interpret schematics, manuals, and diagnostic data
- Strong troubleshooting, problem-solving, and time-management skills
- Experience with maintenance management systems (SAP or similar) is an asset
- Physically capable of performing underground work, including lifting 50 lbs, working in confined or uneven conditions, and tolerating environmental challenges
- Willingness to work rotating day and night shifts on a 7x7 or 14x14 rotation
- Successful completion of a fit-for-duty medical, including drug and alcohol screening

### What you'll get in return

- Opportunity to earn up to a 60% (target) bonus on top of the proposed wage
- Relocation & housing assistance available for all roles
- Flexible rotation options (7x7, 14x14) to support strong work-life integration
- FIFO/DIDO from anywhere! Thunder Bay airport provides ease and convenience with the connection to most national flights.
- Shuttles provided to & from the airport/camp/site
- Full camp accommodations for both FIFO and DIDO workers (featuring private en-suite bathrooms)
- 100% employer-paid benefits including health, dental, vision, and paramedical coverage
- Educational assistance for Hemlo employees & scholarships for the dependents of Hemlo employees
- Above-market wages and salaries, with bonus programs and 12% pension contributions for all roles
- Clear opportunities for career progression and internal mobility
- Direct access to senior leadership and on-site mentorship

Hays Recruitment in proud partnership with Hemlo Mining Corp.

If you're interested in this role talk to [owen.macpherson@hays.com](mailto:owen.macpherson@hays.com), the specialist consultant managing this position or call us at **5874100635**

If this job isn't quite right for you, but you are looking for a new position, please contact us for a confidential discussion about your career.