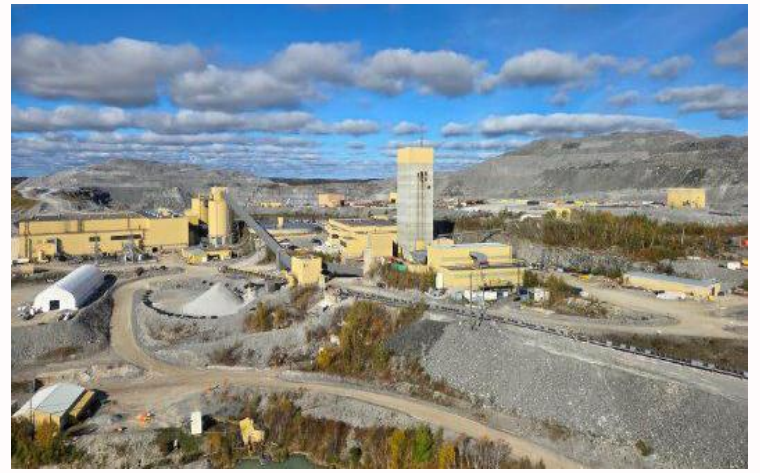


Underground Shift Supervisor

The Hemlo Mine (“Hemlo”) is a long-life, fully integrated gold mining operation located approximately 35 km east of the town of Marathon in Northwestern Ontario, Canada. With more than a decade of reserves and significant exploration upside along the proven Hemlo greenstone belt, the organization is positioned to unlock the next chapter of growth at one of Canada’s premier gold districts.



Your new role

As an Underground Shift Supervisor, you will provide front-line leadership and supervision of underground mining activities, ensuring safe, efficient, and compliant execution of both production and development on shift. Working a 7x7 or 14x14 rotation of 12-hour day/night shifts, you will be accountable for crew safety, operational coordination, and the achievement of daily and longer-term production targets.

You will lead and support underground crews through effective communication, shift line-ups, and strong field presence. Responsibilities include coordinating development and production activities such as drilling, ground support, mucking, and hauling, identifying and mitigating hazards, and ensuring compliance with regulations and site procedures. You will work closely with Maintenance, Planning, and Technical Services teams to support operational performance, while also mentoring crew members and contributing to a strong safety culture..

What you'll need to succeed

- You will have a minimum of 5–10 years of underground hard rock mining experience, including at least 2–5 years in a supervisory role
- Underground Hard Rock Mining Supervisory Common Core certification and a secondary school diploma or equivalent.
- A strong understanding of underground mining methods, safety regulations, and production practices is essential.
- You are a confident leader with excellent communication, organizational, and decision-making skills, capable of managing competing priorities in a fast-paced environment.
- You must be physically capable of working in underground conditions and willing to work rotating shifts.
- A valid driver’s license is required, along with the ability to meet pre-employment fitness and safety testing requirements.

What you'll get in return

- Relocation & housing assistance available for all roles
- Flexible rotation options (4x3, 7x7, 14x14) to support strong work-life integration
- 100% employer-paid benefits including health, dental, vision, and paramedical coverage
- Educational assistance for Hemlo employees & scholarships for the dependents of Hemlo employees
- Above-market wages and salaries, with bonus programs and 12% pension contributions for all roles
- Clear opportunities for career progression and internal mobility
- Direct access to senior leadership and on-site mentorship

Hays Recruitment in proud partnership with Hemlo Mining Corp.

If you're interested in this role talk to owen.macpherson@hays.com, the specialist consultant managing this position or call us at **5874100635**

If this job isn't quite right for you, but you are looking for a new position, please contact us for a confidential discussion about your career.